

Promenade Lawn

Framed by a beautiful waterfront and lush open lawns, amidst the serenity of Bay East Garden, Promenade Lawn is a verdant venue suitable for any outdoor event. Located near Bay East Bridge and various other facilities, this beautifully landscaped space along the waterfront promenade offers breathtaking views of Marina Bay and the city skyline. Make a splash with water sports, have a field day with a grand carnival, or simply chill out with movies under the stars.

Suitable for

- Family day carnivals
- Sporting events like dragon boat racing, canoeing and running
- Special-themed events
- Outdoor movie screenings

Transport/Access

- Drive to Bay East Garden via Tanjong Rhu Road
- Nearest carpark is Bay East Garden Carpark (opposite PAssion WaVe Building) with 234 carpark lots
- About a 20-minute walk from Marina Barrage
- About a 5-minute walk from Bay East Garden Visitor Centre and Bay East Garden Carpark
- Nearest MRT is Stadium MRT Station

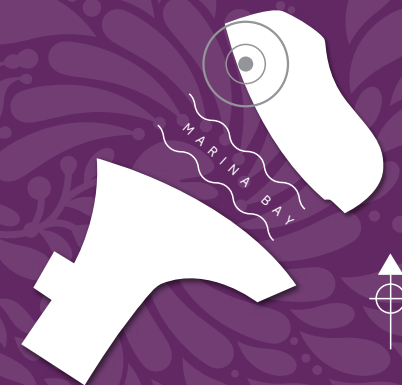


Promenade Lawn

MARINA BAY



LOCATION



Size

· 3,000 square metres

Capacity

· Up to 2,000 guests (standing)

Facilities

- Designated access for service vehicles
- Nearby public washrooms for guests